

Life Technologies and Thermo Scientific Product Offerings

Eliminating the complexities of microscopy

A Life Technologies™ EVOS™ fluorescence imaging system is a must-have in your lab for cell imaging—whether you're capturing images for publication, teaching or research. EVOS™ systems were designed to allow researchers to focus on their data rather than worrying about the operation of a microscope. From cell culture to complex protein analysis and multi-channel fluorescence imaging, EVOS™ imaging systems help you perform a variety of routine and specialty applications. Our proprietary fluorescent LED light cube technology minimizes photobleaching, offers >50,000 hours of LED illumination and allows adjustable intensity—with no darkroom and no consumable costs.

Improved workflow

EVOS™ systems are designed to work together—from the initial cell culture check (for viability and morphology) to more complex analyses such as time lapse, image tiling, and stitching. An EVOS™ system will allow you to spend more time analyzing images—and less time trying to capture images. By minimizing the complexities of fluorescence microscopy without compromising performance, the EVOS™ FL Imaging System is an all-in-one, high-performance imaging system designed for efficiency and ease of use.

Publication-quality imaging

In today's competitive scientific environment, generating publication-quality images is critical to your success. To help ensure you get the publication-quality images you need, EVOS™ systems give you top-of-the-line imaging components, including:

- High-quality camera and optics to capture high-resolution images
- LED illumination to produce superior signal-to-noise ratios
- Easy-to-use image capture and processing software for ready-to-publish images
- Technology that's better for our environment
- Traditional fluorescence microscopy light sources use mercury, a toxic carcinogen requiring special handling and disposal. By using LED light sources, EVOS™ systems do not require these special steps and are thereby more environmentally friendly and energy efficient.



Description

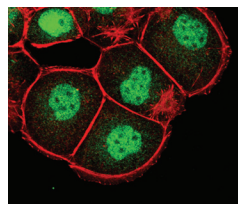
EVOS™ fl Auto Digital Inverted Fluorescence System

Cat. No.

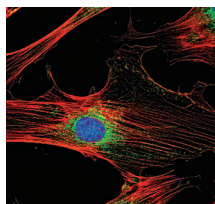
12 463 377

We have more than 40,000 antibodies in 50 research areas.

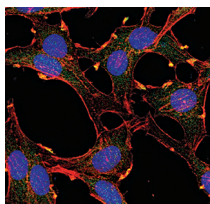
Fisher Scientific offers a broad array of Thermo Scientific Protein Biology conjugated and unconjugated primary antibodies validated in IF applications that can be used together with the EVOS™ FL Imaging System. These primary antibodies can be used solely or in combination with one another to help visualize cellular organelles and structures, determine post-translational modifications and assess the cellular or sub-cellular localization of your protein.



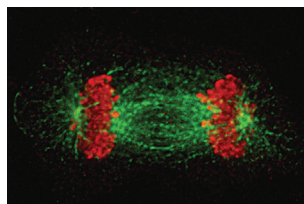
FoxO1 Rabbit Monoclonal (S.502) #MA5-14846



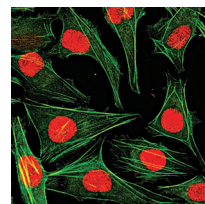
Phosphor-GSK-3β Rabbit Monoclonal (Ser 9) (C.367.3) #MA5-14873



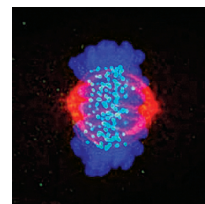
Akt Rabbit Monoclonal (pan) (E.32.10) #MA5-14999



Phospho-Histone H3 Mouse Monoclonal (Ser 10) (K.872.3) #MA5-15220



Histone H3 Rabbit Polyclonal #PA5-17697



Phospho-CENP-A (Ser 7) Rabbit Monoclonal #PA5-17195

Thermo
SCIENTIFIC

life
technologies™

F **Fisher**
Scientific



Find the right Thermo Scientific antibody for your next IF experiment with the EVOS™ fluorescence imaging systems:

Our website enables you to easily search by protein target and then filter by the specific assays that interest you. All of our antibodies are validated in the stated applications and are guaranteed to perform.

Visit www.fisherantibodies.com

Mft. Product No.	Class	Host	Name	Clone	Isotype	Size	Units	Tested Species Reactivity	Tested Application
MA1-054	Monoclonal	Mouse	Adiponectin	19F1	IgG	100	µg	Hu, Ms, Rb	WB, Imaging, ICC, IHC, IHC (P), ELISA
MA1-514	Monoclonal	Mouse	Aryl Hydrocarbon Receptor	RPT1	IgG1	100	µl	Hu, Ms, Rt	WB, Imaging, IHC, IHC (P), IP
PA3-900	Polyclonal	Rabbit	Calreticulin			100	µl	Ca, Hu, Ms, Nhp, Rb, Rt	WB, Imaging, ICC, FACS, IP
PA1-913	Polyclonal	Rabbit	Calsequestrin		IgG	100	µl	Ca, Hu, Ms, Ov, Rt	WB, Imaging, ICC, IHC (P), IP
MA1-048	Monoclonal	Mouse	CaM Kinase II	6G9	IgG1	100	µl	Ms, Rt	WB, Imaging, IHC, IP
MA1-935	Monoclonal	Mouse	CFTR	CF3	IgM	100	µl	Hu, Ms	WB, Imaging, ICC, IHC, FACS, IP
MA1-250	Monoclonal	Mouse	CHOP	9C8	IgG2b	100	µg	Hu, Ms	WB, Imaging, ICC, IHC (F), IHC (P), IP
MA3-921	Monoclonal	Mouse	Dihydropyridine Receptor alpha-2	20A	IgG2a	100	µl	GP, Hu, Ms, Rb, Rt	WB, Imaging, ICC, IHC (P, F), FACS
MA1-310	Monoclonal	Mouse	Estrogen Receptor alpha	33	IgG1	50	µg	Bv, Hu, Ms, Nhp, Rt	WB, Imaging, ICC, IHC (F), IHC (P), FACS, IP, GS, IE
PA1-310B	Polyclonal	Rabbit	Estrogen Receptor beta			100	µg	Hu, Ms, Rt	WB, Imaging, ICC, IHC (P, F)
MA1-510	Monoclonal	Mouse	Glucocorticoid Receptor	BuGR2	IgG2	100	µg	GP, Hu, Ms, Ov, Rb, Rt, Ys	WB, Imaging, ICC, IHC (P), IHC (PFA), FACS, IP, GS
PA1-516	Polyclonal	Rabbit	Glucocorticoid Receptor alpha			50	µg	Hu, Ms, Rt	WB, Imaging, ICC, IHC, IP, ChIP
MA1-516	Monoclonal	Mouse	HIF-1 alpha	mgc3	IgG1	100	µl	Bv, Hu, Ms, Nhp, Po	WB, Imaging, ICC, IHC, IHC (P), IP, GS, IE
MA3-028	Monoclonal	Mouse	HSP70 / Heat Shock Protein 70	JG1	IgG3	100	µl	Ca, Hu, Ms, Nhp	WB, Imaging, ICC, IHC (P), IP
MA3-024	Monoclonal	Mouse	NFATc1	7A6	IgG1	100	µl	Hu, Ms, Nhp, Rt	WB, Imaging, ICC, IHC, IHC (P), IHC (PFA), IP, ChIP, GS
MA1-025	Monoclonal	Mouse	NFATc2	25A10. D6.D2	IgG1	100	µg	Hu, Ms, Rt	WB, Imaging, ICC, IHC (P, F), IP, ChIP, GS
PA1-801	Polyclonal	Rabbit	PAX6			100	µg	Hu, Ms, Nhp, Ov, Rt	WB, Imaging, IP
MA3-019	Monoclonal	Mouse	PDI	RL90	IgG2a	100	µl	Hm, Hu, Ms, Po, Rt	WB, Imaging, IHC (P, F), FACS, IP, IM
MA1-047	Monoclonal	Mouse	Phospho-CaM Kinase II pThr286	22B1	IgG1	100	µl	Hu, Ms, Rt	WB, Imaging, ICC, IHC, FACS, IP, ELISA
MA1-2022	Monoclonal	Mouse	Phospho-H2AX pSer140	3F2	IgG1, kappa	100	µg	Hu, Ms	WB, Imaging, ICC, IHC (P), FACS, ELISA
MN1020	Monoclonal	Mouse	Phospho-PHF-tau pSer202+Thr205	AT8	IgG1	100	ug	Hu	WB, Imaging, IHC (P), ELISA
MN1050	Monoclonal	Mouse	Phospho-PHF-tau pThr181	AT270	IgG1, kappa	100	ug	Hu	WB, Imaging, IHC
MN1040	Monoclonal	Mouse	Phospho-PHF-tau pThr231	AT180	IgG1, kappa	100	µg	Hu, Rt	WB, Imaging, IHC
MA3-922	Monoclonal	Mouse	Phospholamban	2D12	IgG2a	100	µl	Ca, Ck, GP, Hu, Ms, Ov, Po, Rb, Rt	WB, Imaging, ICC, IHC (P), IP
MA1-046	Monoclonal	Mouse	PSD95	7E3-1B8	IgG1, kappa	100	µl	Hu, Ms, Rt, XI	WB, Imaging, ICC, IHC (F), FACS, IP
PA1-075	Polyclonal	Rabbit	RAGE		IgG	100	µg	Hu, Ms, Rt	WB, Imaging, IHC (F)
MA3-916	Monoclonal	Mouse	Ryanodine Receptor	C3-33	IgG1	100	µg	Am, Ca, Ck, Fs, GP, Hu, Ms, Rb, Rt	WB, Imaging, ICC, IHC (F), IHC (P), FACS, IP
MA3-919	Monoclonal	Mouse	SERCA2 ATPase	2A7-A1	IgG2a	100	µl	Ca, GP, Hu, Ms, Po, Rb, Rt	WB, Imaging, ICC, IHC, IHC (F), IHC (P), FACS, IP
MA3-915	Monoclonal	Mouse	Sodium / Potassium ATPase alpha-3	XVIF9-G10	IgG1	100	µg	Bv, Ca, GP, Hu, Ms, Nhp, Ov, Rb, Rt	WB, Imaging, IHC (F), FACS
MN1000	Monoclonal	Mouse	Tau	HT7	IgG1, kappa	100	ug	Bv, Hu	WB, Imaging, ICC, IHC (P), ELISA



© 2014 Thermo Fisher Scientific Inc. All rights reserved.
Trademarks used are owned as indicated at www.fishersci.com/trademarks.

In the United States:

For customer service, call 1-800-766-7000
To fax an order, use 1-800-926-1166
To order online: www.fishersci.com

In Canada:

For customer service, call 1-800-234-7437
To fax an order, use 1-800-463-2996
To order online: www.fishersci.ca



A Thermo Fisher Scientific Brand