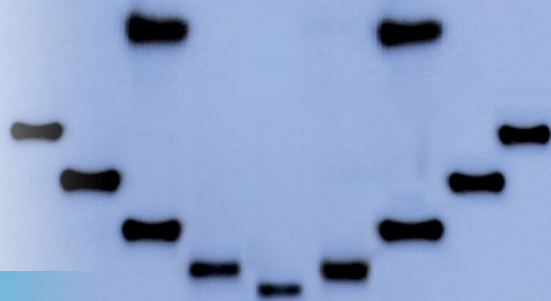


blots to smile about

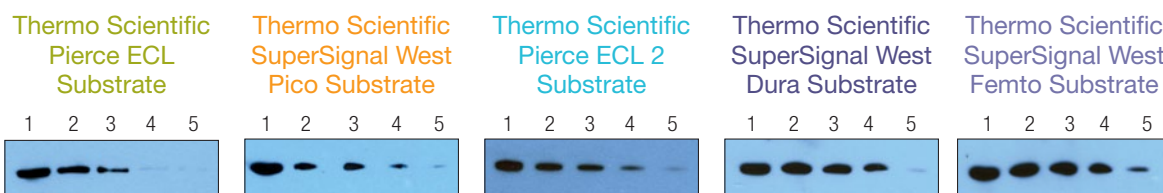


Thermo Scientific HRP Chemiluminescent Substrates

Choose the perfect substrate for your needs. Reach for Thermo Scientific HRP Chemiluminescent Substrates for longer signal duration, broader detection levels and more options. Our Western blotting substrates have a reputation for delivering excellent performance with high sensitivity and low background. But don't take our word for it – read the major research publications to find out how Thermo Scientific Pierce ECL, Pierce ECL 2 and SuperSignal Chemiluminescent Substrates can help your research. Over the past three years, SuperSignal® Substrates have been referenced over 6,500 times.*

Highlights:

- **Excellent sensitivity** – five substrates providing picogram to femtogram sensitivity
- **Strong light emission** – longer signal duration allows for multiple exposures
- **High intensity** – signal is twice as intense as other luminol-based systems
- **Long shelf life** – stable for at least one year
- **Saves antibody** – optimized to work with more dilute primary and secondary antibodies



	Thermo Scientific Pierce ECL Substrate	Thermo Scientific SuperSignal West Pico Substrate	Thermo Scientific Pierce ECL 2 Substrate	Thermo Scientific SuperSignal West Dura Substrate	Thermo Scientific SuperSignal West Femto Substrate
Advantage	Same signal, lower price than other entry-level ECL substrates	Better signal, lower price than competing ECL substrates	Same signal and lower price than competing ECL 2 substrates	Best for use with imaging equipment	Most sensitive substrate for HRP detection
Detection Level	~20 picograms	~1 picograms	~0.5 picograms	~250 femtograms	~60 femtograms
Signal Duration	30 minutes-two hours	6-8 hours	5 hours	24 hours	8 hours
Detection Methods	X-ray film, CCD imager	X-ray film, CCD imager	X-ray film, CCD imager, fluorescence imager	X-ray film, CCD imager	X-ray film, CCD imager
Recommended Primary and Secondary Antibody Dilutions	1° 1:1K 2° 1:1K-1:10K	1° 1:1K 2° 1:20K-1:100K	1° 1:1K 2° 1:25K-1:200K	1° 1:5K 2° 1:50K-1:250K	1° 1:5K 2° 1:100K-1:500K
Select when ...	Target is abundant, sample is abundant and for everyday use	Target is less abundant, sample is limited and for more sensitivity than an entry level ECL substrate	Target is less abundant, sample is limited and for chemifluorescent detection	Target is less abundant, sample is limited and for CCD image capture	Target is least abundant, sample is precious and for maximum sensitivity

* Based on a Highwire and Science Direct literature search covering the past three years performed on April 9, 2012.

For data above: Hsp86 detection in HeLa cell lysate (Lane 1: 10µg total protein; Lanes 2-5: serially diluted 1:1) was performed using Thermo Scientific Pierce HRP Chemiluminescent Substrates. The blots were developed using anti-Hsp86 Antibody (Product # PA3-013) and Goat Anti-rabbit HRP (Product # PI-31460).

Thermo Scientific HRP Chemiluminescent Substrates

Ordering Information

Product #	Description	Pkg. Size
PI-32109	Pierce ECL Western Blotting Substrate	50mL kit
PI-32209	Pierce ECL Western Blotting Substrate	250mL kit
PI-32106	Pierce ECL Western Blotting Substrate	500mL kit
PI-80197	Pierce ECL 2 Western Blotting Substrate <i>Sufficient reagent for 250cm² of membrane</i> Detection Reagent A: 25mL Detection Reagent B: 0.625mL	25mL kit
PI-80196	Pierce ECL 2 Western Blotting Substrate <i>Sufficient reagent for 1000cm² of membrane or ten (10 x 10cm) blots</i> Detection Reagent A: 100mL Detection Reagent B: 2.5mL	100mL kit
PI-80196X3	Pierce ECL 2 Western Blotting Substrate	3 x 100mL kit
PI-34079	SuperSignal West Pico Trial Kit	50mL kit
PI-34077	SuperSignal West Pico Chemiluminescent Substrate	100mL kit
PI-34087	SuperSignal West Pico Chemiluminescent Substrate	200mL kit
PI-34080	SuperSignal West Pico Chemiluminescent Substrate	500mL kit
PI-34078	SuperSignal West Pico Chemiluminescent Substrate	1L kit
PI-37071	SuperSignal West Dura Substrate Trial Kit	20mL kit
PI-34075	SuperSignal West Dura Extended Duration Substrate	100mL kit
PI-34076	SuperSignal West Dura Extended Duration Substrate	200mL kit
PI-34094	SuperSignal West Femto Substrate Trial Kit	20mL kit
PI-34095	SuperSignal West Femto Maximum Sensitivity Substrate	100mL kit
PI-34096	SuperSignal West Femto Maximum Sensitivity Substrate	200mL kit

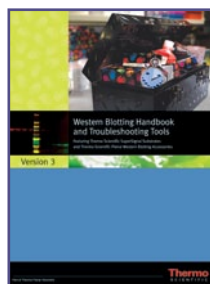
Related Products

PI-46640	SuperSignal Western Blot Enhancer <i>Sufficient for 25 mini-blot of 2,000cm² membrane</i> Kit Contents: Antigen Pretreatment Solution: 250mL Primary Antibody Diluent: 250mL	500mL
PI-84785	SuperSignal Molecular Weight Protein Ladder 250µL <i>Sufficient for 50 gel lanes at 5µL per lane</i> Formulation: Solution of antibody-binding polypeptides in reducing SDS-PAGE sample loading buffer	250µL
PI-32430	Stabilized Goat Anti-Mouse IgG (H+L), Peroxidase Conjugated (10µg/mL)	2mL
PI-32460	Stabilized Goat Anti-Rabbit IgG (H+L), Peroxidase Conjugated (10µg/mL)	2mL



Need a larger quantity?

Visit thermoscientific.com/protein-custom to request a quote, or contact our Large Volume and Custom Sales department at LVC.rockford@thermofisher.com



The Western Blotting Handbook and Troubleshooting Guide

This guide details each step of the Western blotting process with technical information and products for transfer, blocking, washing, antibodies, substrates, film and stripping buffer. You will want to keep this guide close at hand because it also includes protocols, references and a troubleshooting guide. **View or download a PDF at thermoscientific.com/pierce or order your FREE copy today, reference number BN10261001.**

thermoscientific.com/pierce

© 2012 Thermo Fisher Scientific Inc. All rights reserved. These products are supplied for laboratory or manufacturing applications only. All trademarks are property of Thermo Fisher Scientific Inc. and its subsidiaries.



In the United States:
For customer service, call 1-800-766-7000.
To fax an order, use 1-800-926-1166.
To order online: www.fishersci.com

In Canada:
For customer service, call 1-800-234-7437.
To fax an order, use 1-800-463-2996.
To order online: www.fishersci.ca

Thermo
SCIENTIFIC

Part of Thermo Fisher Scientific